



THE NETHERLANDS  
(NEDERLAND)



COMMUNICATION

Concerning <sup>(1)</sup>:

- approval granted
- ~~- approval extended~~
- ~~- approval refused~~
- ~~- approval withdrawn~~
- ~~- production definitely discontinued~~

of a type of device pursuant to Regulation number 7.

Approval number: E4-7R-028107


Extension number: 00

Approval mark:

02 R1-S1



8107

1. Trade name or mark of the device : 
2. Manufacturer's name for the type of device : LTL1000R
3. Manufacturer's name and address : Shangyu Groupstar Electric Appliance Co., Ltd.,  
Wufu Industrial Park, Shangyu City, Zhejiang  
Province, People's Republic of China
4. If applicable, name and address of the manufacturer's representative : not applicable
5. Submitted for approval on : March 30, 2010



6. Technical service responsible for conducting approval tests : TÜV NORD Mobilität GmbH & Co. KG  
Institut für Fahrzeugtechnik und Mobilität  
Adlerstrasse 7, D-45307 Essen
7. Date of report issued by that service : April 1, 2010
8. Number of report issued by that service : KR007-A0-1030173
9. Concise description :
- By category of lamp : R1-S1
- For mounting either outside or inside or both <sup>(1)</sup> : outside
- Colour of light emitted : red/white<sup>(1)</sup>
- Number, category and kind of light source(s) : 15LEDs, 12V 1.8W/0.16W, non-replaceable light source
- Voltage and wattage : Rear position: 12V 0.16W  
Stop: 12V 1.8W
- Light source module specific identification code : not applicable
- Only for limited mounting height of equal to or less than 750 mm above the ground : yes/no<sup>(1)</sup>
- Geometrical conditions of installation and relating variations, if any : not applicable
- Application of an electronic light source control gear/variable intensity control : no
- (a) Being part of the lamp : yes/no<sup>(1)</sup>
- (b) Being not part of the lamp : yes/no<sup>(1)</sup>
- Input voltage(s) supplied by an electronic light source control gear/variable intensity control : not applicable
- Electronic light source control gear/variable intensity control manufacturer and identification number (when the light source control gear is part of the lamp but is not included into the lamp body) : not applicable



- Variable luminous intensity : ~~yes~~/no<sup>(1)</sup>
10. Position of the approval mark : on the lens
11. Reason(s) for extension (if applicable) : not applicable
12. Approval : ~~granted/extended/refused/withdrawn~~<sup>(1)</sup>
13. Place : Zoetermeer
14. Date : 19-APR-2010
15. Signature :



The image shows a blue ink signature of R. Kauerz over a circular stamp. The stamp contains the RDW logo, which features a crown and two lions holding a shield, with the text 'RDW' below it. The signature is written in a cursive style.


16. The list of documents deposited with the Administrative Service which has granted approval is annexed to this communication and may be obtained on request.

---

<sup>(1)</sup> Strike out what does not apply.

Application date : April 1, 2010

## 1. Specification data

Type		<b>LTL1000R</b>	
Function		Rear Position Lamp	Stop Lamp
Emitted color		Red	Red
Rated	Voltage	12V(Input range 10V~30V)	
	Wattage	0.16W	1.8W
Applicable Regulation (ECE)		R7.02 Category R1-S1	
Number and category of filament lamp(light source)		15LEDs, Non-replaceable light source	
Location of marking	Rated Voltage and Wattage	Marked on Base	
	Trade mark		Marked on Lens
	Approval mark	Marked on Lens	
Special supply voltage		Not applicable	
Application of additional supply system		<del>Yes</del> / No	
Light source module		<del>Yes</del> / No	

## 2. Construction and material

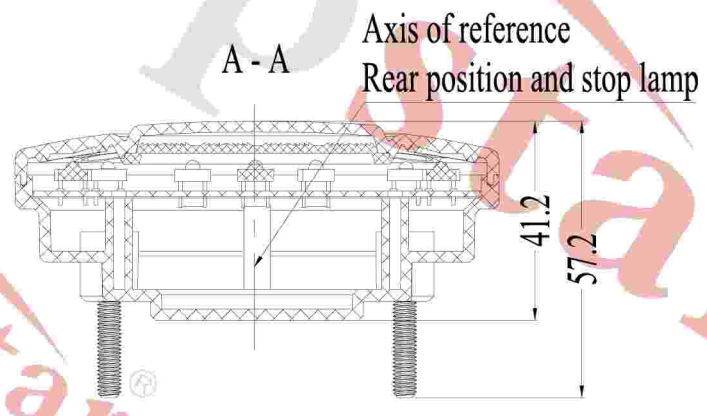
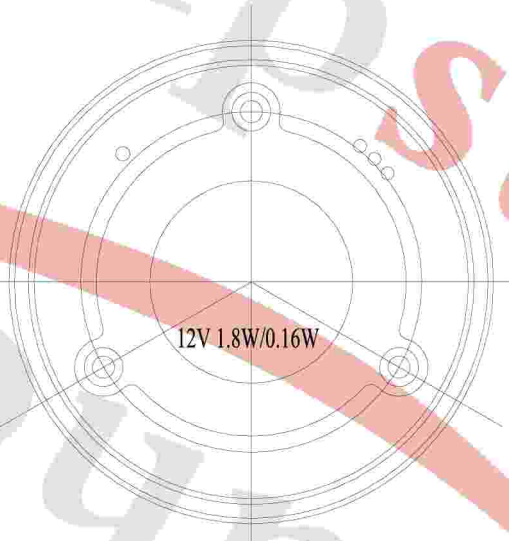
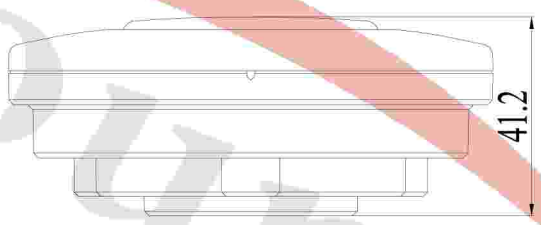
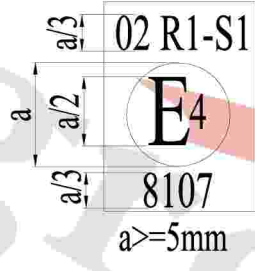
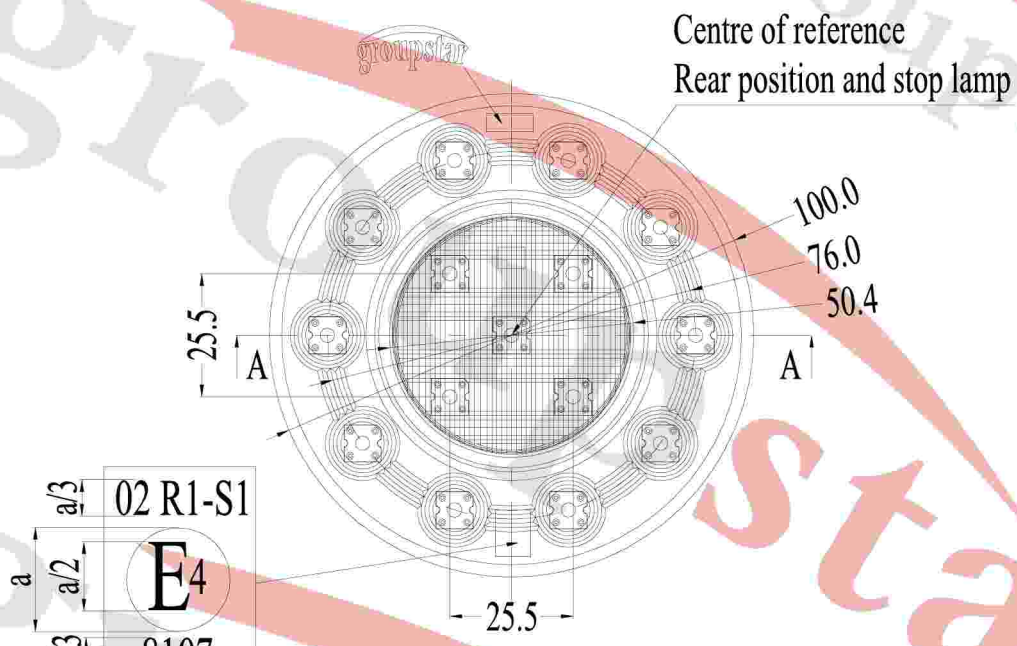
Construction	Material	Remarks
Outer lens	PC	Red
Base	ABS	Black
Electrical wiring	Copper covered with insulation	-

3. Name and address of manufacturer : Shangyu Groupstar Electric Appliance Co., Ltd.  
Wufu Industrial Park, Shangyu City, Zhejiang Province, People's Republic of China

4. Name and address of representative of manufacturer : Not applicable

This information document consists of 3 pages.







Typ / Type : LTL1000R

Hersteller / Manufacturer : Shangyu Groupstar Electric Appliance Co., Ltd.

## Prüfbericht Test Report

Gemäß dem Übereinkommen über die Annahme Einheitlicher Technischer Vorschriften für Radfahrzeuge, Ausrüstungsgegenstände und Teile, die in Radfahrzeuge(n) eingebaut und/oder verwendet werden können, und die Bedingungen für die gegenseitige Anerkennung von Genehmigungen, die nach diesen Vorschriften erteilt wurden

*Agreement concerning the adoption of uniform technical prescriptions for the wheeled vehicles, equipment and parts which can be fitted and/or be used on wheeled vehicles and the conditions for reciprocal recognition of approvals granted on the basis of these prescriptions*

### Uniform provisions concerning the approval of front and rear position (side) lamps, stop-lamps and end-outline marker lamps for power-driven vehicles and their trailers

**ECE-R7**

zuletzt geändert

*as last amended*

02 series of amendment, Supplement 14

Genehmigungsstand <i>Approval status</i>	
	Genehmigungsnummer <i>Number of approval</i>
ECE	---

Structure of report :

1. Test object(s) and general test information
2. Test minutes
3. Remarks concerning tested object(s)
4. Appendices
5. Statement of conformity

Typ / Type : LTL1000R

Hersteller / Manufacturer : Shangyu Groupstar Electric Appliance Co., Ltd.

Test object(s) and general test information

1.1. Test object(s)

identification number : LTL1000R

Version : ---

1.2. General test information

1.2.1. Order issued by : ---  
(if different from manufacturer)

1.2.2. Test object / test vehicle received : not applicable  
on

1.2.3. Test date : April 1, 2010

1.2.4. Test site : Shangyu Groupstar Electric Appliance Co., Ltd.  
Zhejiang, China

1.2.5. Remark : The results of the test refer exclusively to the object(s)  
mentioned under point 1.1 of this report.



Typ / Type : LTL1000R

Hersteller / Manufacturer : Shangyu Groupstar Electric Appliance Co., Ltd.

## 2. Test minutes

2.1. Test facilities : The test facilities are in compliance with the requirements of the Regulation

2.2. Test results : The type has been examined according to the amendments mentioned in appendix 0.

An actual test of the type was not required. The results of the previous tests are still valid.

Markings : The trade mark is marked clearly legible and indelible on the lens of the lamp.

The filament lamp type or rated voltage and wattage is clearly legible and indelible marked on the base of the lamp.

Space for the approval mark and for additional symbols is provided on the lens of the lamp.

2.3. General specifications : The lamps are designed and made that under normal use their satisfactory operation is ensured and they retain the required characteristics.

The colour of the light emitted is within the limits of the coordinates for white prescribed in Annex 5 of the Regulation.

2.4. Photometric tests : The light emitted was obtained by means of an uncolored standard lamp of the category stated in Appendix L 9 or 13.5V/28V for non-replaceable light source, producing the required luminous flux.

The light distribution angles and levels of intensity have been measured in accordance with Annex 4 of the Regulation, based on the manufacturer's indication of the centre of reference and axis of reference.

The rear position (side) lamp is reciprocally incorporated with the stop lamp. The ratio between the luminous intensities of the two lamps when turned on simultaneously at the intensity of the position lamp when turned on alone is greater than 5:1 in the field required.

Typ / Type : LTL1000R

Hersteller / Manufacturer : Shangyu Groupstar Electric Appliance Co., Ltd.

Results of photometric tests of the **Stop lamp: category S1**

distribution of the intensity of the lamps [cd]								
horizontal angle		L20°	L10°	L5°	V	R5°	R10°	R20°
vertical angle	U10°	-	-	70.22	-	79.55	-	-
	U5°	27.67	53.78	-	101.00	-	71.89	43.33
sample 1	H	-	55.81	71.37	103.00	105.10	71.81	-
	D5°	26.90	55.24	-	87.89	-	66.62	41.50
	D10°	-	-	54.25	-	55.23	-	-
vertical angle	U10°	-	-	87.15	-	89.39	-	-
	U5°	32.63	65.86	-	125.70	-	73.13	52.87
sample 2	H	-	67.58	84.07	121.70	111.50	71.37	-
	D5°	25.31	64.34	-	94.44	-	69.92	46.11
	D10°	-	-	63.35	-	66.89	-	-

	sample 1	sample 2	allowable maximum	required minimum
maximum intensity [cd]	108.78	130.10	260	60
minimum intensity in the fields defined in annex 1 of the Regulation [cd]	18.96	14.97	-	0.3

Typ / Type : LTL1000R

Hersteller / Manufacturer : Shangyu Groupstar Electric Appliance Co., Ltd.

Results of photometric tests of the **Stop lamp: category S1**  
 – one light source failure

distribution of the intensity of the lamps [cd]								
horizontal angle		L20°	L10°	L5°	V	R5°	R10°	R20°
vertical angle	U10°	-	-	75.07	-	70.07	-	-
	U5°	37.27	64.11	-	107.90	-	59.97	35.60
sample 1	H	-	61.40	89.40	116.40	88.96	59.86	-
	D5°	38.69	63.67	-	84.53	-	56.54	33.06
	D10°	-	-	58.18	-	54.16	-	-
vertical angle	U10°	-	-	81.46	-	89.67	-	-
	U5°	24.62	64.20	-	112.70	-	81.22	58.70
sample 2	H	-	65.18	80.85	111.50	123.80	78.29	-
	D5°	18.78	59.72	-	93.04	-	72.85	55.98
	D10°	-	-	65.62	-	72.67	-	-

	sample 1	sample 2	allowable maximum	required minimum
maximum intensity [cd]	120.47	128.13	260	60
minimum intensity in the fields defined in annex 1 of the Regulation [cd]	25.03	12.75	-	0.3

Typ / Type : LTL1000R

Hersteller / Manufacturer : Shangyu Groupstar Electric Appliance Co., Ltd.

Results of photometric tests of the **Rear position lamp: category R1**

distribution of the intensity of the lamps [cd]								
horizontal angle		L20°	L10°	L5°	V	R5°	R10°	R20°
vertical angle	U10°	-	-	7.11	-	9.08	-	-
	U5°	2.51	5.67	-	8.96	-	8.14	5.51
sample 1	H	-	5.38	6.62	8.47	9.74	8.36	-
	D5°	2.12	4.68	-	7.94	-	7.36	5.26
	D10°	-	-	5.16	-	6.17	-	-
vertical angle	U10°	-	-	5.10	-	5.79	-	-
	U5°	1.99	3.84	-	7.29	-	5.13	6.08
sample 2	H	-	3.95	5.08	7.42	7.60	5.07	-
	D5°	1.91	3.86	-	6.20	-	4.70	2.95
	D10°	-	-	3.81	-	3.90	-	-

	sample 1	sample 2	allowable maximum	required minimum
maximum intensity [cd]	10.08	7.87	17	4
minimum intensity in the fields defined in annex 1 of the Regulation [cd]	1.81	1.34	-	0.05

Typ / Type : LTL1000R

Hersteller / Manufacturer : Shangyu Groupstar Electric Appliance Co., Ltd.

Results of photometric tests of the **Rear position lamp: category R1**  
 – one light source failure

distribution of the intensity of the lamps [cd]								
horizontal angle		L20°	L10°	L5°	V	R5°	R10°	R20°
vertical angle	U10°	-	-	5.62	-	5.23	-	-
	U5°	2.74	4.67	-	8.03	-	4.42	2.67
sample 1	H	-	4.48	6.60	8.67	6.58	4.38	-
	D5°	2.83	4.61	-	6.21	-	4.13	2.52
	D10°	-	-	4.27	-	3.94	-	-
vertical angle	U10°	-	-	6.55	-	7.24	-	-
	U5°	1.93	5.03	-	8.96	-	6.46	4.61
sample 2	H	-	5.12	6.44	8.96	10.06	6.27	-
	D5°	1.46	4.73	-	7.47	-	5.78	4.44
	D10°	-	-	5.08	-	5.67	-	-

	sample 1	sample 2	allowable maximum	required minimum
maximum intensity [cd]	8.97	10.41	17	4
minimum intensity in the fields defined in annex 1 of the Regulation [cd]	1.93	1.01	-	0.05

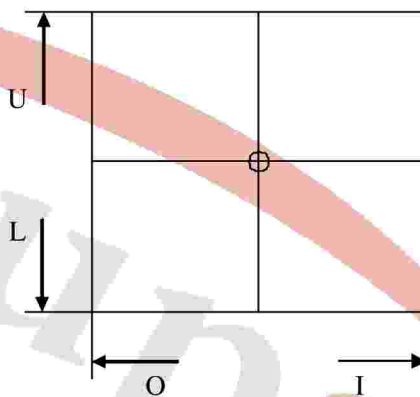
Typ / Type : LTL1000R

Hersteller / Manufacturer : Shangyu Groupstar Electric Appliance Co., Ltd.

2.5. Illuminating surface : Vertical and horizontal outlines of the illuminating surface of the light-signalling device in relation to the centre of reference.

Definition of the illuminating surface of the device

⊕ centre of reference



function	upper boundary (U) [mm]	lower boundary (L) [mm]	inner boundary (I) [mm]	outer boundary (O) [mm]
Stop	38	38	38	38
Rear position	37	37	37	37

2.6. Explanatory note : This grouped lamp was examined according to following Regulation(s)

---  
 ---  
 ---  
 ---  
 ---

Typ / Type : LTL1000R

Hersteller / Manufacturer : Shangyu Groupstar Electric Appliance Co., Ltd.

### 3. Remark concerning tested object(s)

All versions of the lamps as stated in the information document are covered with the tested version(s) and test object(s) respectively.

### 4. Appendices

L Technical information about the lamp type according to Annex 2 for the communication of the ECE-type approval

0 List of modifications : not attached

1 Information folder no. : LTL1000R - 00

### 5. Statement of conformity

The information folder and the type described there comply with the requirements in the above mentioned directive/ regulation.

The test laboratory is accredited for the above mentioned tests by the RDW, Vehicle Technology and Information Centre, the Netherlands:

Certification Number: RDW-99050016

The technical report (including Appendix-L) consists of pages 1 to 10 and shall not be reproduced except in full without the written approval of the testing laboratory.

Essen, den April 1, 2010  
IFM/#




Dipl.-Ing. K.-S. Kim

Typ / Type : LTL1000R

Hersteller / Manufacturer : Shangyu Groupstar Electric Appliance Co., Ltd.

**Technical information about the lamp type according to Annex 2  
 for the communication of the ECE-type approval**

**Appendix L**

1. Trade name or mark of the device : 
2. Manufacturer's name for the type of device : LTL1000R
3. Manufacturer's name and address : Shangyu Groupstar Electric Appliance Co.,  
 Ltd., Wufu Industrial Park, Shangyu City,  
 Zhejiang Province, People's Republic of  
 China
4. If applicable, name and address of the  
 manufacturer's representative : not applicable
5. Submitted for approval on : March 30, 2010
7. Date of report issued by that service : April 1, 2010
9. Concise description :  
 By category of lamp : R1-S1  
 For mounting either outside or inside or both  
 (1) : outside  
 Colour of light emitted : red/white<sup>(1)</sup>  
 Number, category and kind of light source(s) : 15LEDs, 12V 1.8W/0.16W, non-replaceable  
 light source  
 Voltage and wattage : Rear position: 12V 0.16W  
 Stop: 12V 1.8W  
 Light source module specific identification  
 code : not applicable  
 Only for limited mounting height of equal to or  
 less than 750 mm above the ground : yes/no<sup>(1)</sup>  
 Geometrical conditions of installation and  
 relating variations, if any : not applicable  
 Application of an electronic light source  
 control gear/variable intensity control : no  
 (a) Being part of the lamp : yes/no<sup>(1)</sup>  
 (b) Being not part of the lamp : yes/no<sup>(1)</sup>  
 Input voltage(s) supplied by an electronic light  
 source control gear/variable intensity control : not applicable  
 Electronic light source control gear/variable  
 intensity control manufacturer and  
 identification number (when the light source  
 control gear is part of the lamp but is not  
 included into the lamp body) : not applicable  
 Variable luminous intensity : yes/no<sup>(1)</sup>
10. Position of the approval mark : on the lens
11. Reason(s) for extension (if applicable) : not applicable